

0.125" FACEPLATE

7.225" CIRCUIT BOARD

0.75"

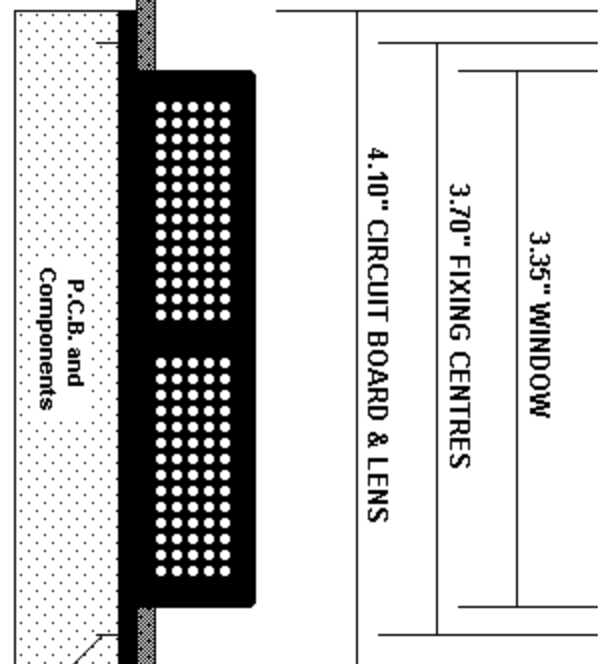
0.625"

4.45" LENS

4.20" WINDOW

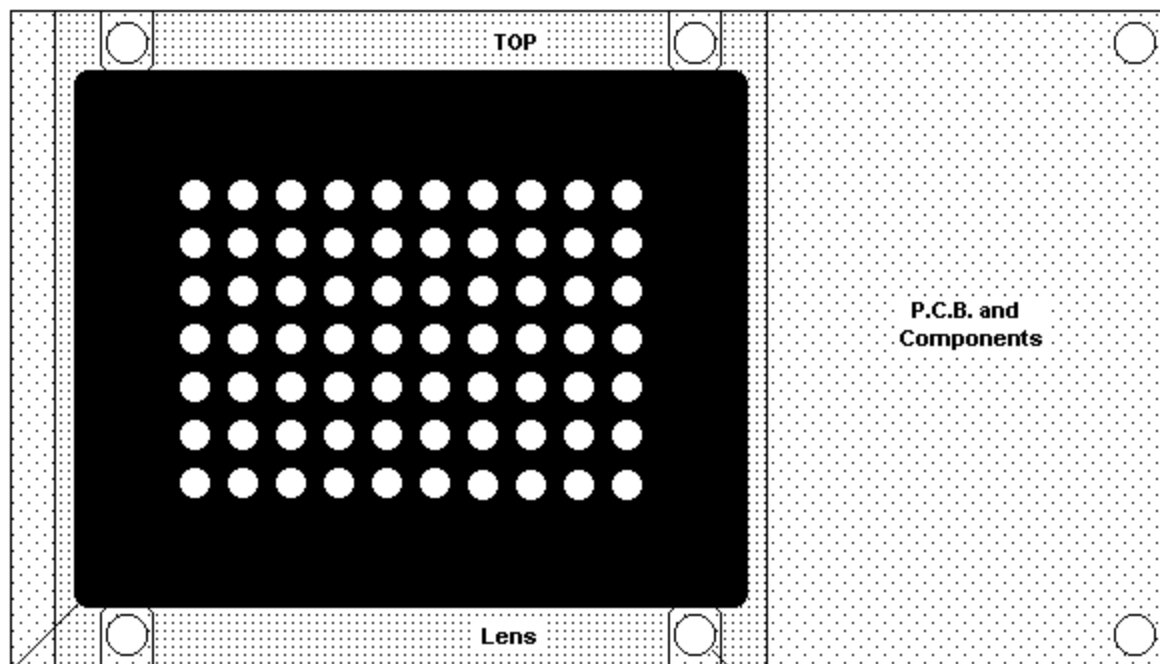
2.50" CIRCUIT OVERHANG

3.55" FIXING CENTRES



SIDE VIEW

R 0.063"



FRONT VIEW

4 STUDS M4 x 12 mm

**IMPORTANT**  
INSULATION  
WASHERS  
MUST BE USED  
BETWEEN PCB  
AND SECURING  
NUTS

**Sentry Series DS220-X**  
**2 Character 50mm Dot Matrix Display**  
**with Bi-Colour Scrolling Side Bars**

Programmed Technology Ltd  
C.E. Electronics Division  
P.O. Box 1679, Marlow, Bucks, UK, SL7 2YR  
Tel/Fax +44 (0) 1628 487633

**PART/DESC:** DS220-XX DOT MATRIX 2 DIGIT 50MM (2IN) W/DOT MATRIX SIDE BARS (MICROCOMM ONLY)

**Rev.Date:** January 2, 2007

**By:** Sue Carey

Option #1 – Color

R Red

G Green

A Amber

B Blue

Option #2 – Lens

G Gray

X No Lens