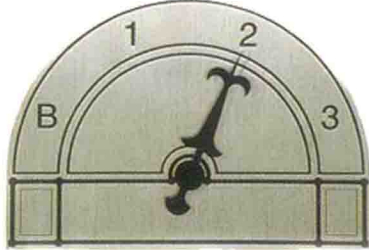
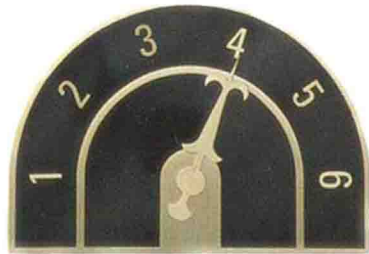


### Standard Design



- \* 11 gauge Material with engraved or etched, black filled border and characters
- \* Available in #4 or #8 Stainless, Muntz (60/40) or Bronze (90/10)
- \* Arrow available in Stainless, Muntz (60/40), Bronze (90/10), Black or white

### Laminated Design (with border and/or centrepiece)



- \* Formica background laminated to a steel base plate. metal overlay (border and centrepiece) with raised characters
- \* Formica is available in Gloss Black, Gloss Blue, Marbled Black, Marbled Blue or Marbled Beige
- \* Border and Centrepiece available in #4 or #8 Stainless, Muntz (60/40) or Bronze (90/10)
- \* Characters available in #4 or #8 Stainless, Muntz (60/40) or Bronze (90/10), Black or White. In sizes 5/8", 1" p"
- \* Arrow available in Stainless, Muntz (60/10), Black or White

### Laminated Design (without border or centrepiece)



- \* All the features shown above without the border or centrepiece

### Multi-Light Design (without arrow)



- \* Base plate is #8 Mirror gauge and overlays are #4 brushed 18 gauge.
- \* Available in Stainless, Muntz (60/40) or Bronze (90/10)
- \* Company Name / Logo or Building Name can be engraved at bottom of unit.
- \* Indicators are 1" cut-thru type filled with clear epoxy and back-lighted with LED lamps.